



# NEWSLETTER

## NEW LOGOS

W.R. MEADOWS designs, manufactures, and markets high quality building materials for today's construction professionals. Products are sold through an authorized distribution network. The company has been family-owned and operated since 1926 and has consistently focusing on product quality, outstanding service, and business integrity.



Solution Provider], has started the implementing of DATASCOPE WMS into the MEADOWS group. The first site has been identified as one of MEADOWS's main manufacturing plants based in Hampshire, IL. Thereafter the software will be rolled out to eight additional sites across the USA and Canada. Some preparation has already started on the next site based in Danville, Virginia, USA.

B.T. Partners, a premium DATASCOPE DSP (DATASCOPE

## NEW SOFTWARE ENHANCEMENTS

### > DATASCOPE PRINTING MODULE IMPROVEMENT

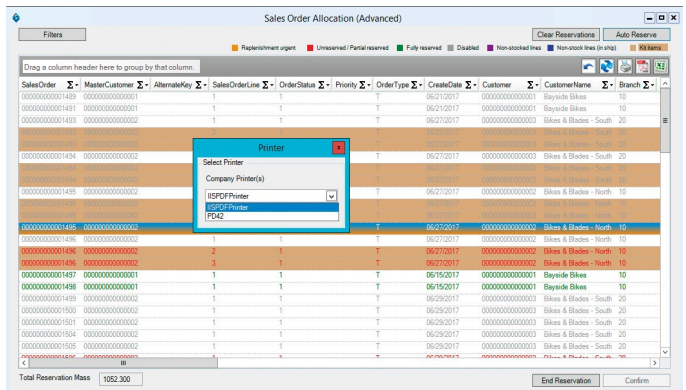
In version 4.0.41 we have improved the scalability of printer setup to allow customers to setup printers by warehouse and then by a new level called "Printing Station".

This change allows us to now configure many printing stations within a single warehouse. On scanner or PC login, the user is asked to select a default printing station for all documentation.

An example of many printing stations within a warehouse would be your checkout tables. Each checkout table may have three printers; a label printer (for the carton labels), a packing slip

printer and an invoice printer. These printers would all be linked to the same printing station. The checkout operator working at this table would simply select the Printer Station at the time of login and all printouts would be directed to this station.

Another example would be a factory with many Job receipting stations. In the past, we configured the label printing on job receipt to default to a warehouse. Now we can default the printing to as many printing stations as we need.



Also, a printer selection popup can be prompted on the scanner or the PC (options for both) which lists the printers available for selection based on the warehouse & system action, much like windows printing.

The new functionality has been developed to allow the existing setup to remain as is. Therefore, on upgrading to version 4.0.41 you will not need to change your current setup. It will continue as normal until you setup the new printing level.

## > PICKING BIN IMPROVEMENT

Existing clients will know that all picked stock moves from the pick face bin locations into a generic picking bin per warehouse. The stock remains in this pick bin until the order is confirmed at the end of the picking cycle or after the order has been checked out. At this point, DATASCOPE WMS ships the order and processes the dispatch note or invoice thus relieving the stock from the generic pick bin.

Shipping issues or order return credits can affect this bin. In these cases, the issue is highlighted on the Balance Report. On large sites, the volume moving through this pick bin can be as many as 15 000 transactions per day. In cases like this it can be difficult to manage the Balance Report.

To alleviate this we have added a setting into DATASCOPE WMS that will automatically open a new bin location for every picking slip so that the stock movements for each order are managed through their own bin location. This means that any error in that picking process will be very clearly contained to a single bin location.

## > VB SCRIPTING

VB Scripting functionality has been rolled out to all main transaction screens in the DATASCOPE WMS software. You will now be able to tailor any of these screens using the VB scripting functionality. Further you can use this function to call external programs from within the DATASCOPE screen.

## > UPGRADE WIZARD

The full software installation and upgrade wizard has been improved. Where in the past, a level of technical know-how was required to upgrade a site to a new version we can now upgrade fast and efficiently in a wizard type environment. As an example, an upgrade from version 4.0.31 to 4.0.41 takes around

20 minutes. All table updates and new features are installed seamlessly.

## > DATASCOPE WMS E.NET

Numerous new e.net business objects have been released for DATASCOPE WMS. You can now develop a wide range of customized software solutions on your site and integrate these seamlessly with the DATASCOPE software.

## > GENERAL IMPROVEMENTS

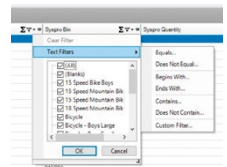
We are seeing the fruits of our full-time senior software tester. Screen after screen has been enhanced and rounded off.

## > HELP FILES

In the current development cycle, we are upgrading the product help files to contain more detail so that you can manage your implementation better. Expect to see detailed descriptions of how screens can be used within your business to improve your operations.

## > EXCEL FILTERS ON GRIDS

We have added excel type filters to all the software grids. You can now filter any grid of data by clicking on the field header and entering a range of filters.



## > JOB ISSUE LOT CONTROL

The existing scanner based Job Issue screen now references our bin location setting for Lot control. One can now set a pick face bin location to FIFO or LIFO and the scanner will automatically consume the lot on the selected basis. This is used in a situation when one issues stock from a bulk tank or silo. There may be more than one lot in the bin and we want the scanner to automatically consume the stock on a FIFO basis. We have had this functionality in the picking module for some time.

## > SALES ORDER KITS

The software now caters for the picking, checkout and shipping of *sales order kits*. We have found that many distribution centers in the USA sell product kits. The software now understands the component products relating to a kit and reserves and reserves the picking of these components, however when at checkout, the kit stock code is checked and shipped.

## > BARCODE X-REF

For some time, we have had functionality that holds a range of barcodes for a single SKU. Typically, these codes are entered for various pack sizes of the stock code. We can scan the SYSPRO stock code or the products barcode or we can scan a barcode for a carton of 6 or a barcode for an outer-pack carton of 36. All scanner screens will now cross reference this table and convert any of these barcodes back to the correct SYSPRO SKU.

## > ADVANCED INTEGRATION TO UPS AND FEDEX

We have developed an advanced LSP [Logistic Service Provider] integration module with a 3rd party product to integrate with UPS and FedEx. This solution allows our clients to automatically rate shop after order entry to select the most efficient service provider. At packing and shipping numerous integration points manage the correct labeling requirements and EDI management to the selected logistic provider.

## LAUNCH OF E-LEARNING TO DSP

DATASCOPE continues to grow our E-learning offering. New modules detailing Administration of the Software and Software Functionality are in the final stages of production and due to launch shortly.

At this point we are extending to selected customers an invitation to become early-adopters and to gain pre-view access to the DATASCOPE University Course Material.

This is part of value-added services to our customers and will be at no extra cost.

### Courses will cover:

- Our Project Methodology - to familiarize customers with our way of working.
- Solution Models – to show the flexibility of the product and how it can be best applied in various environments.



- Managing Your A-Class Warehouse – assisting warehouse managers to get the most out of DATASCOPE WMS.
- DATASCOPE Hardware – assisting more technical staff to get to know Intermec hardware.
- Resources – There are numerous video resources available.
- Software Admin – Shows the administration functions, e.g. adding operators and installing the software, and will assist in making customers more self-sufficient.
- Software Functionality – Gives a solid foundation of DATASCOPE WMS knowledge. This will provide a working knowledge of most of the common functionality of DATASCOPE WMS.

If you are interested to enroll your staff, please feel free to contact us on [adrianb@datascopewms.com](mailto:adrianb@datascopewms.com)

## STAFF ANNOUNCEMENT

**Brenton Baartzes** has joined our Development Team as a **Senior Software Developer** on 01 September 2017. Brenton worked for DATASCOPE in 2012/2013 and is thus rejoining the team. Since leaving DATASCOPE Brenton has gained some good experience in the motor industry, working on EDI, Integration and JIT Solutions. We look forward to Brenton further strengthening our fast growing development team.



**Nazeer Butler** has joined our Development Team as a **Senior Software Developer** on 01 September 2017. Nazeer has a strong technical background along experience in the Android, mobile development space.





**TAURUS PACKAGING (PTY) LTD**

Head Office  
P.O. Box 12856 , Die Boord , 7613  
Bloemendal , Bonniemile Rd , Stellenbosch  
T 021 881 3309 F 021 881 3371

Factory  
P.O. Box 162 , Mandeni , 4490  
33 Green Str , Isithebe , KZN  
T 032 459 2254 F 032 459 1432

22 June 2017  
Datascopewms  
24 Havelock Street  
Port Elizabeth  
6001

To whom it may concern:

**IMPLEMENTATION OF DATASCOPE WMS SYSTEM FOR SYSPRO – TAURUS PACKAGING**

Taurus Packaging (Pty) Ltd is a manufacturer of paper bags and sacks. We convert in excess of 20 000 tons of paper every year in our operations. With around 75% of all raw materials being imported, we need to carry a lot of raw material stocks. These stocks are very high in value and therefore has to be managed and monitored very carefully. Using Syspro, we contacted Datascopewms with an enquiry on the WMS system they provide for Syspro. From the outset, the professionalism and can do attitude with which they handled the initial contacts and subsequent site visits to determine Taurus' needs were impressive.

Taurus' processes and products are very complex and requires a lot of unique solutions. Datascopewms invested a lot of time and effort to completely understand our requirements and where the standard system did not cater for our needs, they developed custom solutions to deal with the complexities. These custom developments were tested on numerous occasions and amendments made where necessary without any effort. Every step of the process and implementation was continuously being monitored with constant feedback sessions via video conferencing which made it possible to have the personal interaction required when resolving complex problems. Before the initial installation and go-live of the system, the system and custom interfaces were tested to determine where there were still changes and improvements required. This allowed the Company to continue with its normal operations without the stresses of a new system being developed.

Once all initial problems had been addressed, the system was installed and the Datascopewms team spent all hours of the day and night training and resolving user problems as well as a few system problems. Having now used the system for a number of months, our stock count is a lot more accurate and assists with locating stock not counted with great ease. The system is user friendly. Datascopewms team is always eager to assist in developing and customising the system to incorporate new requirements as they become apparent with the use of the system. We would be happy to recommend Datascopewms and WMS for Syspro to anyone.

Yours faithfully

  
Johann Botha  
Operations Manager