



## NEWSLETTER

### NEW SITE GO LIVE

While most companies enjoyed a well-earned break at the end of 2014, most of DATASCOPE's employees worked through shutdown to prepare for three go lives in January. One of these go lives was an existing client of ours that has moved into new premises and has implemented a full conveyer and voice picking solution. This is our second implementation of an automated conveyer based warehousing operation (Jonsson Workwear being the first) and we see more clients in time investing in this sort of solution. Although it is expensive and should only be considered by high volume distribution warehouses, it offers substantial return on investment values. Coupled with voice picking in the high volume picking zones and normal scanner transactions for all supporting movements, this warehouse model takes a distribution centre to a new level. Beside the operational efficiency improvements there is the wow factor for

potential clients. In the case where a company distributes international brands on behalf of a principle, this mode of operation goes a long way in winning new brands.



### GEDORE GOES LIVE

Yet another company goes live on DATASCOPE WMS. The prestige brand Gedore "tools for life" has recently gone live on DATASCOPE WMS. After over a year of planning and warehouse preparation in which the entire warehouse was re-laid out and new racking installed, the DATASCOPE team completed the installation of the software and prepared for the go live early January 2015. At the time of printing this



**Werkzeuge fürs Leben • Tools for life**

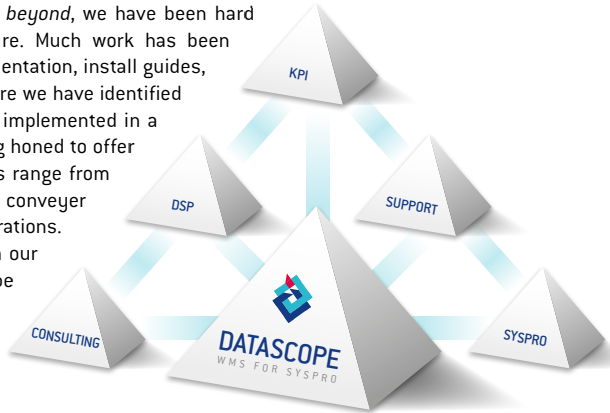
newsletter the implementation is still in an early stage but the solution is operating as expected. We wish Gedore every success going forward.

## NEW DATASCOPE ELECTRONIC NEWSLETTER

Our quarterly DATASCOPE Newsletter will be sent out electronically going forward. Please e-mail [admin@datascope.co.za](mailto:admin@datascope.co.za) if you have any problems opening this e-mail.

## LEADING BEYOND

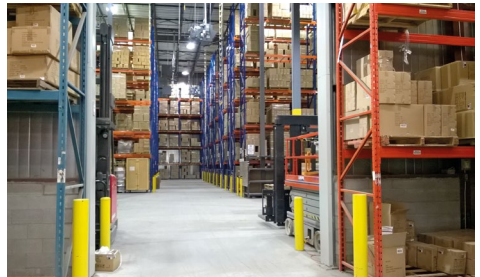
In keeping with our annual theme of *leading beyond*, we have been hard at work polishing our WMS suite of software. Much work has been focused on creating standard software documentation, install guides, instruction guides etc. Also, within the software we have identified eleven standard solution models that can be implemented in a plug and play manner. These models are being honed to offer a quick implementation approach. The models range from a simple distribution centre to very complex conveyer driven DC's and complex manufacturing operations. In time we will release much of this detail on our new web portal. Existing customers will be able to log into a secure portal to access documentation, upgrade patches, training videos and much more.



## INTERNATIONAL EXPANSION

Our expansion into international markets continues with presentations in Canada to 3 potential clients. SYSPRO has a strong following in Canada with experienced software VARs (Value Added Resellers) and large clients who have run SYSPRO for many

years. As is the case in South Africa and elsewhere, there are a number of these companies that have a need for a professional WMS solution.



## DATASCOPE WMS FOR SYSPRO 7

In September 2014, DATASCOPE released a new version of WMS which is ready to operate with SYSPRO 7. In October 2014 we upgraded one of our existing large manufacturing and distribution sites to this latest

version in tandem with their upgrade to SYSPRO 7. Both upgrades have been a great success. All DATASCOPE WMS versions from version 4.0.25 onward can now run with SYSPRO 6.1 or SYSPRO 7.





October 2014

## Reference Letter: Datascope Warehouse Management Solution (WMS)

Man-Dirk (Pty) Ltd comprises of a group of companies that are specialist suppliers of tools and equipment in the maintenance, repair and operating (MRO) product groupings to mining, industry, power generation, municipalities, government and quasi-government departments.

In order to operate quickly, efficiently and consistently, Man-Dirk's large focus is that of a smooth and highly effective logistics department offering paramount service to our customers. When we considered a Warehouse Solution, we looked at 6 key factors that led to our decision.

- Integration with Syspro
- Technical ease and user friendliness
- Cost
- Local support
- Evidence of local implementations & overall company presence and case studies
- Ability to assist Man-Dirk's Warehouse Design and Layout

Datascope, through their warehousing and logistics knowledge, were able to offer great insight into our logistics division and at the same time, their software was able to accommodate our company's specific needs, which meant that customization to match our business processes were developed in an easy and affordable manner.

It is important to highlight that the detailed implementation plan, handholding and onsite training before go-live resulted in a highly professional and smooth transition in adopting WMS.

To date, WMS has been in operation since March 2012 and we have seen the following major business benefits:

1. Increased productivity of our warehouse operations thus streamlining our logistics process
2. Improved accuracy of picking and thus reduction in credits and time taken to resolve issues
3. Major improvement in our warehouse operations visibility thus knowing at any stage where a sales order is in the picking process, thus improving customer satisfaction
4. Reduction in stock take variance due to ongoing cycle counts and accurate picking / dispatching
5. Excellent ongoing support from Datascope and continuous improvement activities that continue to keep our warehouse operations running effectively and optimally

If you are running Syspro as your core system, then in our opinion, **DATASCOPE WMS** is the best possible warehouse management solution available in South Africa to take your warehouse and logistics operations to the next level.

If you have any questions, please do not hesitate to contact me

Tina Angelos

Special Projects

[tina@mandirk.co.za](mailto:tina@mandirk.co.za)

**DIRECTORS:** K.G. Angelos, J.B. Walters, P.E. Bernstein, W.R. Taylor, C.E. Walters, A. Bekker

## STAFF ANNOUNCEMENT



DATASCOPE welcomes Muhie van Loggerenberg to our team.

Muhie brings with him over 10 years working experience within the SYSPRO arena. He will be based at our Midrand office, and will manage WMS Projects in both Gauteng and Kwa-Zulu Natal (Durban) areas.

## SUPER USER TRAINING

Please note that our next Super User training course will be held at our Midrand offices on the 12th and 13th of March. Space is limited so please book now to avoid disappointment. We would encourage key resources to attend this course to improve their knowledge of the administration on DATASCOPE WMS.



## WMS EPOD SYSTEM

We have spent a number of hours with one of our large clients to workshop a new WMS module which we will be calling WMS ePOD. This is a strategic module that takes the aspect of stock control beyond the walls of the warehouse and out into the field of delivery.

WMS ePOD is an electronic POD system, designed to electronically load stock onto trucks at the DC via scanners within network range, and then off-load the goods electronically at the client's customers via scanners using the GPS network. Electronic signature capture and photograph functionality are two key features of this new module. WMS ePOD will be designed for use on CipherLab scanner devices – a less expensive alternative to the Intermec CK3 range,

but built-for-purpose truck deliveries in the field.

Once goods have been off-loaded using the mobile CipherLabs, customers are required to sign electronically on-screen and these POD's are automatically transmitted back to the DC via the cellphone network. This functionality greatly facilitates our clients by pin-pointing exactly when and where deliveries have been made and gives instant information to the sales staff when querying order statuses.

CipherLab scanners are ultra-fast devices and have built in cellphone and camera functionality which proves very useful in today's fast-paced distribution environment.



WMS ePOD is in the process of being developed and will be released towards the end of the first quarter of 2015.

Just another DATASCOPE WMS module which gives our SYSPRO clients the competitive strategic advantage to outstrip their competition in their respective industries!

## LATEST WMS DEVELOPMENTS

At DATASCOPE we are working tirelessly to improve our software, below are some of the highlights of new features added in version 4.0.26 and 4.0.27

- **My Menu** – This feature allows each operator to add a customized menu to WMS. Menu items from any WMS Module (that the Operator has access to) can be added and removed. This improves efficiency as it allows each operator to have quick and easy access to the screens that he or she uses on a regular basis.
- **DRS Portal** – This feature makes it far easier for

users to navigate to SQL Server Reporting Services (SSRS) Reports. These specialized reports are run on the server and can also be configured to automatically mail reports to key personnel.

- **EDI System** – Substantial Improvements including compatibility with the Trade and Promotions module in SYSPRO.

Current Users of the DATASCOPE WMS are encouraged to log *Enhancements* to the WMS via the Support Portal. These enhancements will then be considered for inclusion in future versions.