



**DATASCOPE**  
WMS FOR SYSPRO



---

## Warehouse Management System Version 5

### **BROCHURE 7**

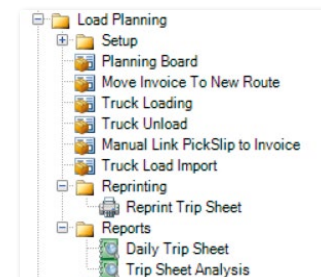
- > Load Planning
- > Shipping
- > Customer Returns

## LOAD PLANNING

The Load Planning module is a great tool for the dispatch manager as it has a very graphical interface that shows orders by route and their progress through the warehouse. The module is specifically designed to assist companies that run their own fleet of delivery vehicles.

All route allocation and delivery sequence numbering remains in SYSPRO against the customer master record. DATASCOPE WMS uses this detail to manage the routes on the warehouse floor.

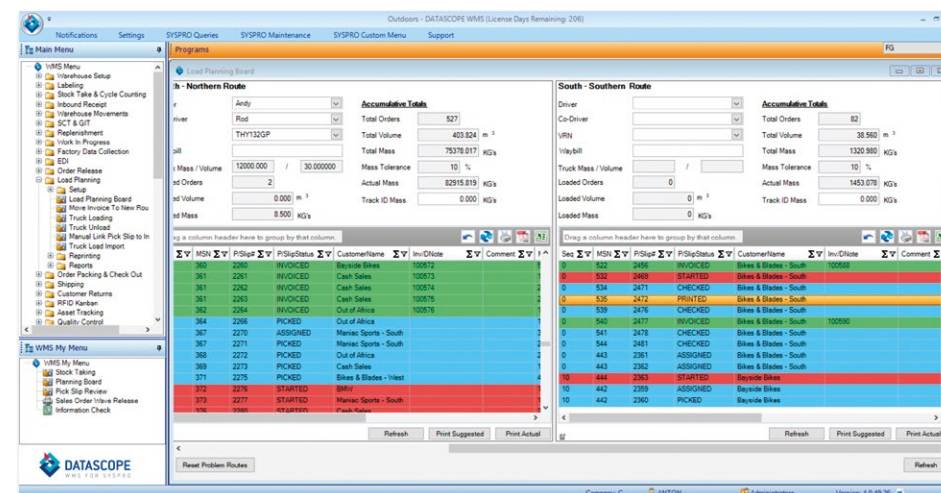
Typically released picking slips are reviewed on the planning board to ensure that they are receiving the correct attention with a view to have the route ready for shipment by the time the allocated delivery vehicle arrives.



The planning board can also be configured to release picking slips to the floor. In this scenario, the order releasing processes would still review and release orders to the warehouse but the dispatch manager can view them on the load planning board and release them to pickers so that he can focus on specific routes for the day.

As the picking slips move through the warehouse their statuses change. This is represented in the load planning screen as assorted colors. The dispatch manager will focus on the key routes for the day and expedite the pick slips to “paint” the screen green. Green represents that the order is picked, checked and ready for delivery.

Once the route is ready to be loaded the dispatch manager prints a load schedule and all orders



The screenshot displays the 'Load Planning Board' interface. It features a navigation menu on the left, a central data table, and summary panels for two routes: 'Northern Route' and 'South - Southern Route'.

**Summary Panels:**

- Northern Route:** Total Orders: 527, Total Volume: 403,824 m<sup>3</sup>, Total Mass: 75,378,017 KGs. Order volume: 2, Order mass: 8,500 KGs.
- South - Southern Route:** Total Orders: 82, Total Volume: 38,560 m<sup>3</sup>, Total Mass: 1320,800 KGs. Order volume: 0, Order mass: 0 KGs.

**Order List Table:**

Seq	MSH	PI Slip	PI Slip Status	Customer Name	Inv/Driver	Comment
380	2260	INVOICED	Bayville Bikes	100572		
381	2261	INVOICED	Cash Sales	100573		
381	2262	INVOICED	Cash Sales	100574		
381	2263	INVOICED	Cash Sales	100575		
382	2264	INVOICED	Out of Africa	100576		
384	2266	PICKED	Out of Africa			
387	2270	ASSIGNED	Manica Sports - South			
387	2271	PICKED	Manica Sports - South			
388	2272	PICKED	Out of Africa			
389	2273	PICKED	Cash Sales			
271	2275	PICKED	Bikes & Blades - Villet			
376	2276	STARTED	Bikes & Blades			
373	2277	STARTED	Manica Sports - South			
176	2266	AT ARRIVAL	Truck Return			
522	2456	INVOICED	Bikes & Blades - South	100588		
522	2469	STARTED	Bikes & Blades - South			
534	2471	CHECKED	Bikes & Blades - South			
535	2472	PRINTED	Bikes & Blades - South			
539	2476	CHECKED	Bikes & Blades - South			
540	2477	INVOICED	Bikes & Blades - South	100590		
541	2478	CHECKED	Bikes & Blades - South			
544	2481	CHECKED	Bikes & Blades - South			
443	2361	ASSIGNED	Bikes & Blades - South			
443	2362	ASSIGNED	Bikes & Blades - South			
444	2363	STARTED	Bayville Bikes			
442	2369	ASSIGNED	Bayville Bikes			
442	2360	PICKED	Bayville Bikes			

are scanned onto the truck. This can be setup to load in reverse delivery sequence if the truck is loaded and unloaded from the back. The result allows the driver to pull orders from the truck in drop off sequence.

Before leaving the driver pulls a “trip sheet” with all details of the deliveries required. Each delivery is then made and on return to the warehouse the POD’s are captured to close the cycle off.

If a truck returns with some orders that were not delivered the driver uses the scanner based Unload function to place the order back into delivery cage.

Shipping Palletization  
User: JAVAN007 FG C: C

Shipping Track ID: S1040

Bulk:  Item:

Remove	Track ID
<input type="checkbox"/>	2397+FG+B2
<input checked="" type="checkbox"/>	2397+FG+B3

Remove Quantity:

Buttons: Exit, Clear, Remove, Complete

Bottom: Bulk Pack, Unit Pack, Remove

Shipping Palletization  
User: JAVAN007 FG C: C

Track ID:

Scanned Track ID	Qty
2476+SA	3,000...
2459+SA	
2458+SA	
2454+SA	
2034+FG	

Total Count: 5

Shipping Track ID: S1040

Buttons: Exit, Post, Complete

Bottom: Bulk Pack, Unit Pack, Remove

Shipping Palletization  
User: JAVAN007 FG C: C

Track ID: 2476+SA

Stock Code	Lot	Qty
A100		3,000...

Stock Code: A100

Lot:

Quantity: 2

Shipping Track ID: S1040

Buttons: Exit, Override, Post, Complete

Bottom: Bulk Pack, Unit Pack, Remove

Shipping Truck Loading  
User: JAVAN007 FG C: C

Vehicle: OJT625EC

Trip Sheet: 27

Waybill: 10008

Track ID: 1964+FG+B1

Track ID	Type	Status
2818	BOX	LOADED
2819	BOX	LOADED

Buttons: Exit

Truck Loading  
User: JAVAN007 Wh: FG C: C

Route: North

Inv / PS / Disp Note: 100592

Disp:

Post Successful

Buttons: Exit, Post

Dispatch Put Away  
User: JAVAN007 FG C: C

Picking Slip: 2266

Current Bin: <None>

Dispatch Bin: LANE05

Buttons: Exit, Post

Customer Collect  
User: JAVAN007 Wh: FG C: C

Invoice: 100573

Picking Slip	Customer
2261	Cash Sales

Buttons: Exit, Post

Notifications Settings SYSPRO Queries SYSPRO Maintenance SYSPRO Custom Menu Support

Programs FG

WMS Menu

- Warehouse Setup
- Labeling
- Stock Take & Cycle Counting
- Inbound Receipt
- Warehouse Movements
- SCT & GIT
- Redemption
- Work In Progress
- Factory Data Collection
- EDI
- Setup
- Order Release
- Order Planning
- Order Packing & Check Out
- Shipping
- Trucks
- Shipping Track ID Type
- Shipment Type Mainte
- Shipper List
- New Shipper
- Reprinting
- Customer Returns
- RFID Number
- Asset Tracking
- Quality Control

WMS My Menu

- Stock Taking
- Planning Board
- Pick Slip Review
- Sales Order Invo Release
- Information Check

Waybill Maintenance

Waybill Number: 10008

Picking Track IDs

Picking Track ID	Stock Code	Lot Number	Qty Picked	Qty Palletized	Shipping Track ID	Picking Slip	Sales Order	Bin	Status
1964+FG+B1 (5 items)	A100		3.000000	2.000000		1969	0000000000996	PICKFG	INACTIVE
	A301					1969	0000000000996	PICKFG	INACTIVE

Waybill Maintenance

Waybill Number: 10008

Waybill Header | Sales Orders | Picking Track IDs | Shipping Track IDs

Shipping Track IDs

Information Check (Pick Slip Review Redirect)

Linked to Waybill: 2801

Stock Code: A100

Lot Number: 10004

Job Number: 10008

Warehouse: FG

Purchase Order:

Track ID Type: NORMAL PICKFACE

Include INACTIVE Tracks:

Select All Track ID Types:

PalletNumber: 2801 (2 items)

KEY	ProductClass	StockCode	Bin	BinType	Bin	Ware	Description	Qty	Qty/Res
2801LOT10	FGC	LOT100	PICKFG	Receiving	ACTIVE	FG	Racing Bicycle	0.000000	0.000000
2801A100	MB	A100	PICKFG	Receiving	ACTIVE	FG	15 Speed Mountain	0.000000	0.000000

Company: C ANTON Administrators Version: 4.0.49.26

## SHIPPING

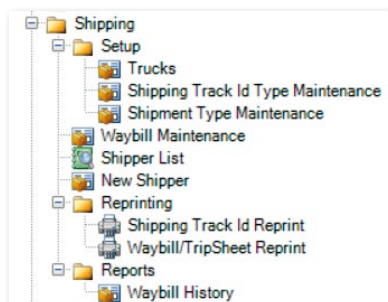
The shipping module is built to manage the shipment of orders through a third party logistics provider (LSP's). This module is highly configurable and allows for fixed and flexible loading.

The shipping department will use this module to review SYSPRO orders or DATASCOPE picking slips and assign these for shipment with a logistics carrier. The screens allow the user to view the order detail in several ways to best optimize the shipment.

Before the orders are even picked they can be linked to a shipment waybill number. This waybill can be set as fixed load or flexi load.

### FIXED LOAD

In the fixed mode, it is understood that the selected orders will be shipped on this waybill and therefore the detail of the shipment can be prepared and printed before the truck arrives.



### FLEXI LOAD

In this mode, the orders are linked to the waybill but the confirmation of what is shipped is only done after loading the truck. This allows the shipping department to plan the required loads but to only release the documentation at the end. This mode allows us to process a SYSPRO dispatch note only after truck loading. This way we can ensure that what is on our dispatch note and on the waybill, matches and the customer will then expect a second delivery with the balance.

FULL INTEGRATION TO YOUR LSP WITH DETAILED SHIPPING DATA AS CARTON AND PALLET LEVEL

# CUSTOMER RETURNS

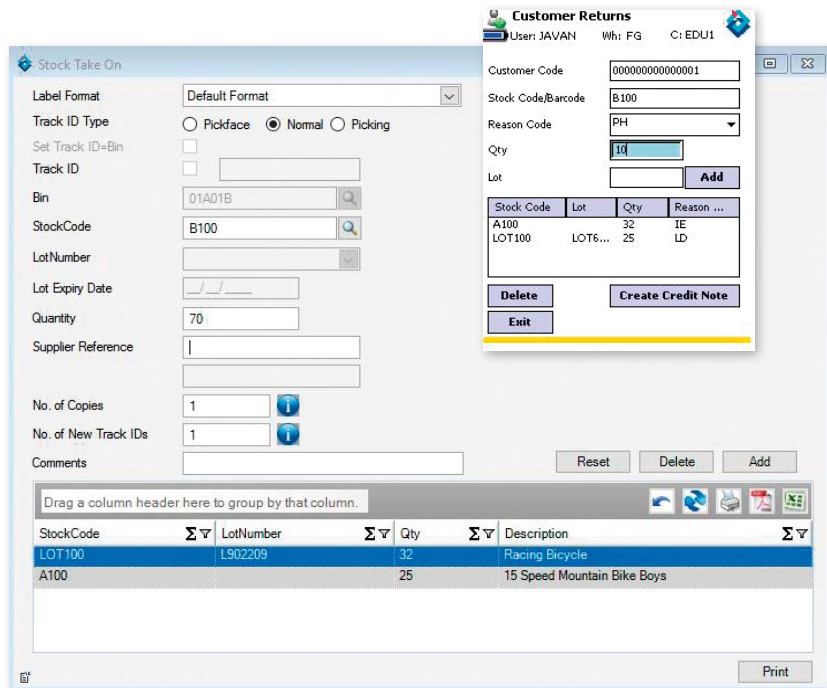
Several customer return options are available to DATASCOPE WMS users. The following are a list of some of the more common options used:

## SIMPLE RETURN

In this mode, all credit notes are processed directly into SYSPRO using the SYSPRO options to return the product into a selected returns warehouse and bin location. Once the credit has been processed the DATASCOPE Advanced TrackID labeling application is used to open the credit note and print a master TrackID. This barcoded label is given to the floor and the required transactions are posted to move the stock back into inventory. If the unit is to be scrapped then the user can perform the required Expense Issue or Inventory Adjustment.

## SCANNED RETURN

In some environments, large volumes of single products are returned. This happens in industries such as cosmetics and fragrances where the customer may close a retail store and return all the product. A mobile device is used to open a new credit note and all product is simply scanned in. Once complete the credit department is notified and the credit reviewed. Here pricing can be adjusted and the credit clerk can specify if the product will be returned to stock or not. Once the credit has been reviewed the credit is passed and a master TrackID is printed for the warehouse to perform the required stock movements from there.





# DATASCOPE

WMS FOR SYSPRO

## **DATASCOPE NORTH AMERICA, INC.**

4427 WILGROVE MINT HILL ROAD / CHARLOTTE /  
NORTH CAROLINA / 28227 / U.S.A.

T: +1 980 819 5244 / M: (704) 488 7294 / E: sales@datascopewms.com

## **DATASCOPE CONSULTING (PTY) LTD. (SOUTH AFRICA)**

167 14th ROAD / WHITBY MANOR OFFICE ESTATE /  
NOORDWYK EXT.61 / MIDRAND / 1685  
24 HAVELOCK STREET / CENTRAL / PORT ELIZABETH / 6001  
T: 086 111 3712 / I: +27 41 585 3595 / F: 041 582 3504  
sales@datascopewms.com / support@datascopewms.com

[WWW.DATASCOPEWMS.COM](http://WWW.DATASCOPEWMS.COM)

Copyright © 2008 DATASCOPE. All rights reserved. All brand and product names are trademarks or registered trademarks of their respective holders. No part of this material may be reproduced or transmitted in any form or by any means, electronic or mechanical, including photocopying, recording, or by any information storage or retrieval system without prior written permission from the publisher.

### **Notice of Liability**

Every effort has been made to ensure that this book contains accurate and current information. However, DATASCOPE and the author shall not be liable for any loss or damage suffered by readers as a result of any information contained herein.